

Customer :

customer

Customer part :

customer part

Comment :

Comment

S1=2.92

S2=2.93

Tmax=458

Tp S2=497.0

PI=0.5

HI=82

Sample =1735.80

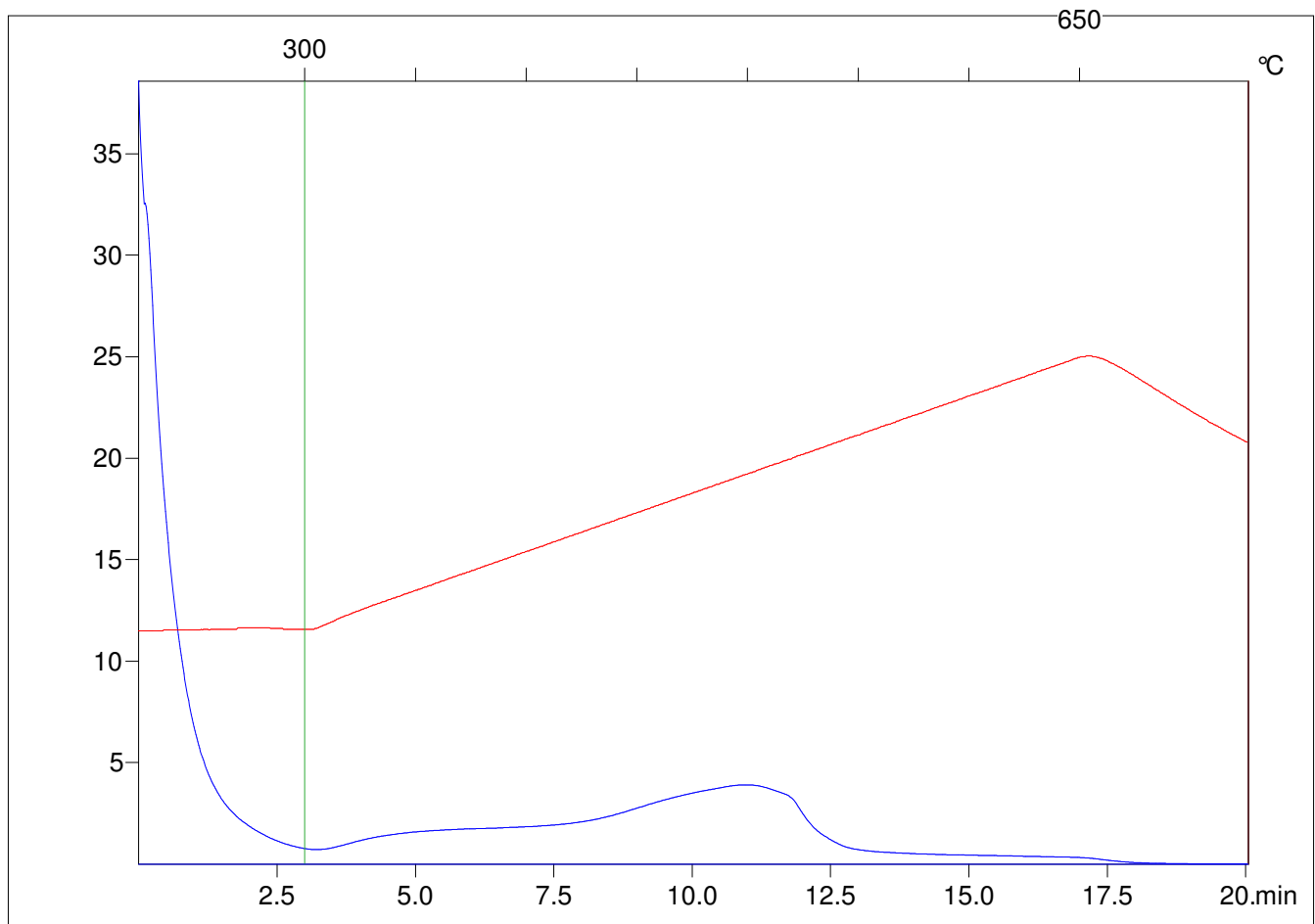
Method =Bulk Rock

Cycle=Basic

KFID(10\*9)=1444

Qty =70.6

TOC=3.58



C:\VINC\PK2\_1792\PK062.R00 : FID pyrolysis graphic

State Ok

Pyro Status Negative value

Oxi Status Negative value